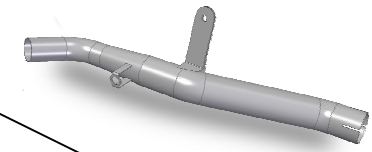


#	DESCRIPTION	PART NUMBER	QTY
1	Silenziatore / Muffler - db killer 50.DK.075.0	SUONO 200	1
2	Tassello grande / Big rubber block	50.73.203.1	2
3	Tassello piccolo / Small rubber block	50.73.202.1	2
4	Staffa in carbonio / Carbon fiber bracket	50.55.180.1	1
5	Rondella in gomma / Rubber washer	50.73.227.1	1
6	Vite M8x40 / Screw M8x40	50.73.075.1	2
7	Rondella in alluminio nera / Black aluminium washer	50.73.221.1	2
8	Staffa / Bracket	50.55.718.0	1
9	Dado M8 flangiato / Flanged nut M8	50.73.393.1	2
10	Tubo di raccordo / Link pipe	9773MM001S7	1
11	Dado rapido M6 / Cage nut M6	50.66.009.1	1
12	Fascetta / Pipe clamp	50.73.1017.0	1
13	Guarnizione in grafite / Graphite bush	50.72.35.41.30	1
14	Fascetta Ø 44/47 mm / Pipe clamp Ø 44/47 mm	50.FA.006.1	1
15	Tubo in gomma per molla / Rubber pipe for spring	50.73.210.1	1
16	Molla corta / Short Spring	50.73.123.1	1

OPTIONAL PARTS

Tubo no kat - No kat pipe
 Monta sia con silenzatori MIVV che con lo scarico originale
 It fits both MIVV and genuine silencer

MM.001.C1



APPLICAZIONI / APPLICATIONS			
CODICE / CODE	SILENZIATORE / MUFFLER	TUBO / PIPE	FASCETTA / CLAMP
MM.001.L7	INOX (COPPE CARBONIO) / ST. STEEL (CARBON CAPS)	INOX / ST. STEEL	CARBONIO / CARBON FIBER
MM.001.L9	STEEL BLACK (COPPE CARBONIO) / STEEL BLACK (CARBON CAPS)		