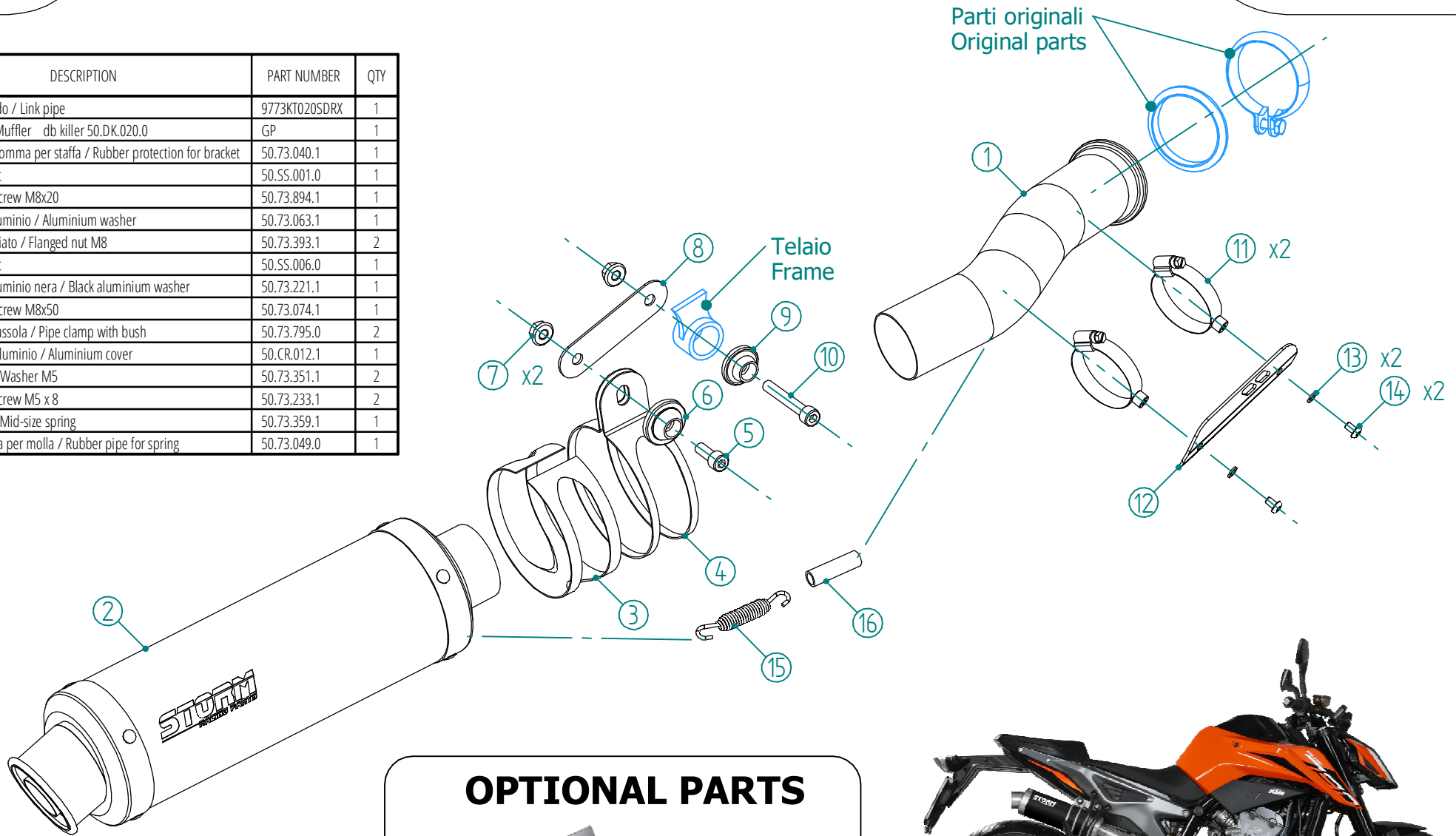
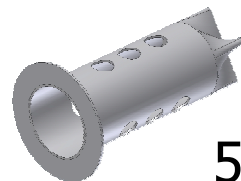


#	DESCRIPTION	PART NUMBER	QTY
1	Tubo di raccordo / Link pipe	9773KT020SDRX	1
2	Silenziatore / Muffler db killer 50.DK.020.0	GP	1
3	Protezione in gomma per staffa / Rubber protection for bracket	50.73.040.1	1
4	Staffa / Bracket	50.5S.001.0	1
5	Vite M8x20 / Screw M8x20	50.73.894.1	1
6	Rondella in alluminio / Aluminium washer	50.73.063.1	1
7	Dado M8 flangiato / Flanged nut M8	50.73.393.1	2
8	Staffa / Bracket	50.5S.006.0	1
9	Rondella in alluminio nera / Black aluminium washer	50.73.221.1	1
10	Vite M8x50 / Screw M8x50	50.73.074.1	1
11	Fascetta con bussola / Pipe clamp with bush	50.73.795.0	2
12	Copertura in alluminio / Aluminium cover	50.CR.012.1	1
13	Rondella M5 / Washer M5	50.73.351.1	2
14	Vite M5 x 8 / Screw M5 x 8	50.73.233.1	2
15	Molla media / Mid-size spring	50.73.359.1	1
16	Tubo in gomma per molla / Rubber pipe for spring	50.73.049.0	1



APPLICAZIONI / APPLICATIONS			
CODICE / CODE	SILENZIATORE / MUFFLER	TUBO / PIPE	FASCETTA / CLAMP
74.KT.020.LXS	INOX / ST. STEEL	INOX / ST. STEEL	INOX / ST. STEEL
74.KT.020.LXSB	STEEL BLACK		

OPTIONAL PARTS



DB KILLER
 50.DK.081.0

