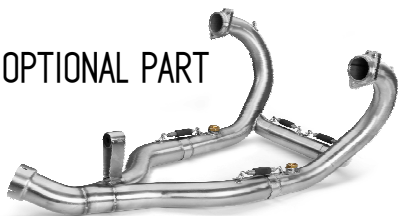


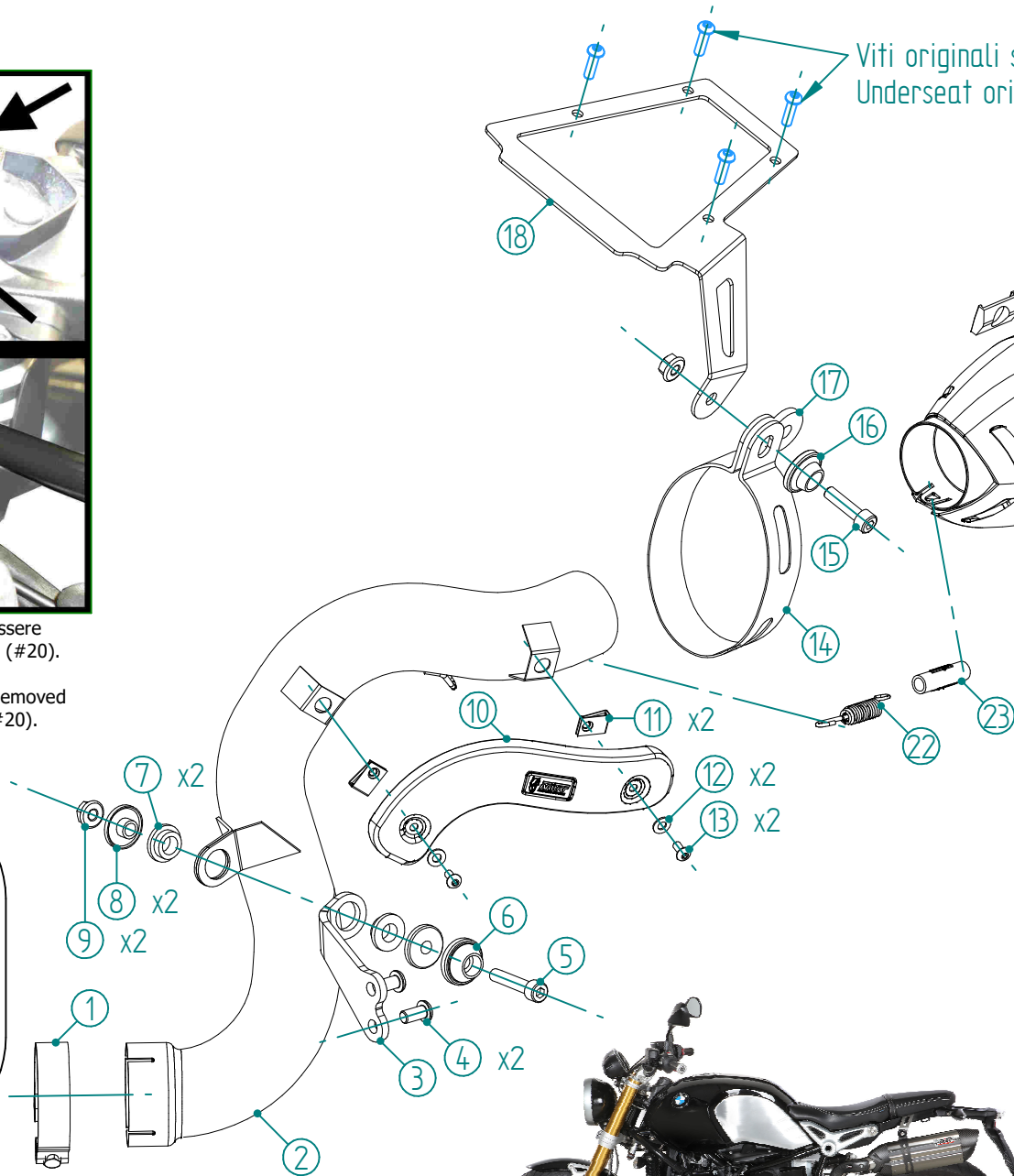
Il telaio pedana passeggero originale deve essere rimosso e sostituito dalla staffa sottosella MIVV (#20).

The original passenger footrest frame must be removed and replaced by the MIVV underseat bracket (#20).

### OPTIONAL PART



TUBO NO KAT / NO KAT PIPE  
00.73.B.021.C1



Viti originali sottosella ( x4 )  
Underseat original screws (x4)

#	DESCRIPTION	PART NUMBER	QTY
1	Fascetta Ø 64/67 mm / Pipe clamp Ø 64/67 mm	50.FA.011.1	1
2	Tubo di raccordo / Link pipe	9773B022S7	1
3	Staffa / Bracket	50.55.865.0	1
4	Vite M8 x 16 / Screw M8 x 16	50.73.098.1	2
5	Vite M8x40 / Screw M8x40	50.73.075.1	1
6	Rondella in alluminio / Aluminium washer	50.73.291.1	1
7	Silentblock / Silentblock	50.73.380.1	2
8	Boccola / Bush	50.73.381.1	2
9	Dado M8 flangiato / Flanged nut M8	50.73.393.1	2
10	Protezione in carbonio / carbon cover	50.CR.020.0	1
11	Dado rapido M5 / M5 cage nut	50.73.674.1	2
12	Rondella / Washer	50.62.127.0	2
13	Vite M5 x 8 / Screw M5 x 8	50.73.459.1	2
14	Staffa in carbonio / Carbon fiber bracket	50.55.180.1	1
15	Vite M8x30 / Screw M8x30	50.73.219.1	1
16	Rondella in alluminio nera / Black aluminium washer	50.73.221.1	1
17	Rondella in gomma / Rubber washer	50.73.227.1	1
18	Staffa / Bracket	50.55.863.0	1
19	Silenziatore / Muffler - db killer 50.DK.074.0	SUONO 270	1
20	Tassello grande / Big rubber block	50.73.203.1	2
21	Tassello piccolo / Small rubber block	50.73.202.1	2
22	Molla corta / Short Spring	50.73.123.1	1
23	Tubo in gomma per molla / Rubber pipe for spring	50.73.210.1	1



APPLICAZIONI / APPLICATIONS			
CODICE / CODE	SILENZIATORE / MUFFLER	TUBO / PIPE	FASCETTA / CLAMP
B.022.L7	INOX (COPPA CARBONIO) / ST. STEEL (CARBON CAP)	INOX / ST. STEEL	CARBONIO / CARBON FIBER
B.022.L9	STEEL BLACK		